

---

# Taxonomic status of *Pisidium amnicum* (Müller, 1774) and *P. inflatum* Megerle von Mühlfeld in Porro, 1838 (Mollusca: Bivalvia: Sphaeriidae)

---

Margus VOODE

Centre for Limnology, Institute of Agricultural and Environmental Sciences, Estonian University of Life Sciences, Fr.R.Kreutzvaldi 5, 51014 Tartu, ESTONIA; e-mail [margus.voode@emu.ee](mailto:margus.voode@emu.ee)

**ABSTRACT.** In accordance with the taxonomic system adopted in Russia and used also in Estonia, the largest local forms of pea clams (Sphaeriidae) have been treated as two species, *P. amnicum* and *P. inflatum*. The aim of the study was to clarify if *P. amnicum* and *P. inflatum* are separate species. Populations of both forms from Estonia were analysed genetically and morphologically. Analysis of the COI and ITS-1 gene fragments revealed that these two forms were genetically indistinguishable. Although there were statistically significant differences in the relative proportions of the shell between their typical individuals, there occurred also intermediate values. Consequently, *P. inflatum* cannot be considered as a separate species and should be treated as an ecological variety of *P. amnicum* that inhabits mainly a characteristic sandy substrate.

---

## Introduction

*Pisidium amnicum* (Müller, 1774), is the largest species among the pea clams (genus *Pisidium* Pfeiffer, 1821) with a length of up to 11 mm [Glöer, Meier-Brook, 2003]. It inhabits slow-flowing rivers, ditches and lakes [Kuiper, Wolf, 1970]. In the system adopted in Russia and used also in Estonia [e.g., Timm, 1975; Starobogatov, 1977], *P. amnicum* s.l. is split into two species, *P. amnicum* s.str. and *P. inflatum* Megerle von Mühlfeld in Porro, 1838. In Western Europe, *P. inflatum* is either treated as a more tumid form of *P. amnicum* i.e. *P. amnicum* var. *inflatum* [Clessin, 1887; Germain, 1930], considered a synonym of *P. amnicum* [Woodward, 1913], or ignored.

In the Russian system the species of the freshwater Bivalvia are primarily distinguished from each other, first of all, by comparing their external shell contour, i.e. by the „comparatorial method“ [Logvinenko, Starobogatov, 1971; Shikov, Zatravkin, 1991]. The method was developed by B. M. Logvinenko and Ya. I. Starobogatov at the beginning of the 1970s [Logvinenko, Starobogatov, 1971]. It is based on the assumption that the shell growth curve corresponds to a logarithmic spiral [Thomp-

son, 1945; Stasek, 1963; Raup, 1966]. This spiral is characterized by a constant angle between the radius and the tangent line drawn to any point of the spiral [Logvinenko, Starobogatov, 1971; Shikov, Zatravkin, 1991]. In order to use this method, the shell must be positioned on its anterior end in the plasticine or wax so that the edges of the anterior and posterior lateral teeth coincide with its optical axis [Logvinenko, Starobogatov, 1971; Timm, 1975; Stadnichenko, 1984; Korniushev, 2002]. In this case the outer contour (called the frontal section contour) will be drawn by means of the camera lucida and can be used as a species-specific model for comparing the contours of other specimens [Logvinenko, Starobogatov, 1971; Timm, 1975].

The adoption of this new method led to an increase in the number of species. According to V.I. Zhadin [1952], 16 species of pea clams were present in the European part of the ex-USSR, however, in the system based on the comparatorial method their number is 79–83 [Starobogatov *et al.*, 2004; Kantor, Sysoev, 2005]. The method has been used not only for pea clams but also for other bivalves and even gastropods [Logvinenko, Starobogatov, 1971; Izzatullaev, Starobogatov, 1984].

The system based on the comparatorial method has met strong criticism as it is not in accordance with the Biological species concept [Graf, 2007]. The method has even been criticized by one of its developers, B. M. Logvinenko. His studies, based on protein electrophoresis, showed that several Unionidae species determined by the comparatorial method had no molecular biological differences [Kodolova, Logvinenko, 1973, 1974]. Voroshilova [2013] demonstrated that the contour of the frontal shell section does not always correspond to the logarithmic spiral and the values of the axis of the polar angle can overlap even in traditionally accepted species of the genera *Sphaerium* Scopoli, 1777, and *Margaritifera* Schumacher, 1816. It has been shown that there is no hiatus in the relative morphometric proportions between the species of the genus *Mar-*

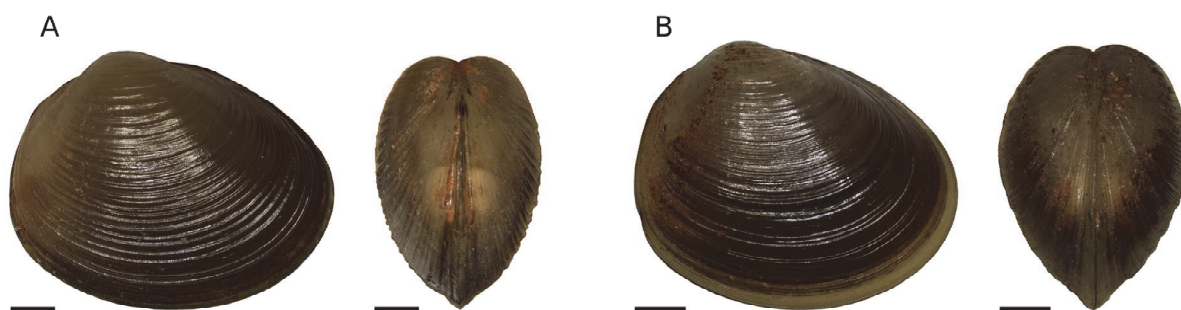


FIG. 1. *Pisidium amnicum* (A) and *P. inflatum* (B) in the lateral and posterior view. *Pisidium amnicum* was collected from Lake Peipsi, *P. inflatum* was collected from Lake Võrtsjärv. Scale – 1 mm.

РИС. 1. *Pisidium amnicum* (A) и *P. inflatum* (B) вид сбоку и сзади. *Pisidium amnicum* собран в Чудском озере, *P. inflatum* собран в оз. Выртсъярв. Масштаб 1 мм.

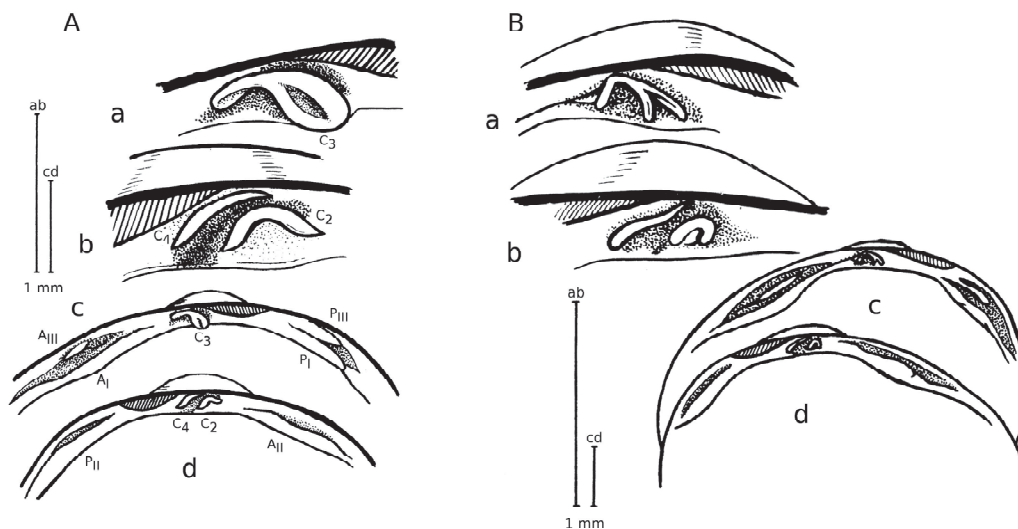


FIG. 2. Hinge teeth of *Pisidium amnicum* (A) and *P. inflatum* (B). C<sub>3</sub> – cardinal tooth of the right valve (a); C<sub>2</sub>, C<sub>4</sub> – cardinal teeth of the left valve (b); A<sub>I</sub>, A<sub>III</sub> – anterior lateral teeth of the right valve (c); P<sub>I</sub>, P<sub>III</sub> – posterior lateral teeth of the right valve; A<sub>II</sub> – anterior lateral tooth of the left valve (d); P<sub>II</sub> – posterior lateral tooth of the left valve. Adapted from Timm [1975].

РИС 2. Замковые зубы *Pisidium amnicum* (A) и *P. inflatum* (B). C<sub>3</sub> – кардинальный зуб правой створки (a); C<sub>2</sub>, C<sub>4</sub> – кардинальные зубы левой створки (b); A<sub>I</sub>, A<sub>III</sub> – передние латеральные зубы правой створки (c); P<sub>I</sub>, P<sub>III</sub> – задние латеральные зубы правой створки; A<sub>II</sub> – передний латеральный зуб левой створки (d); P<sub>II</sub> – задний латеральный зуб левой створки. По Timm [1975].

*garitifera*, determined by the comparatorial method [Sergeeva *et al.*, 2008], and there occurs transition of the contour of the frontal shell section between them [Bolotov *et al.*, 2013].

*Pisidium amnicum* and *P. inflatum* are external-ly different. In the lateral view, *P. inflatum* has a higher and more triangular-shaped shell than *P. amnicum* [Pirogov, 1972; Timm, 1975, 1976; Starobogotov, 1977; Stadnichenko, 1984; Starobogotov *et al.*, 2004] (Fig. 1). The umbo of *P. inflatum* is shifted more backwards than that of *P. amnicum*. Internally, *P. inflatum* is characterized by a thicker hinge plate and a more sharply bent cardinal tooth C<sub>2</sub> [Timm, 1975; Stadnichenko, 1984] (Fig. 2).

*Pisidium amnicum* and *P. inflatum* occur in different substrate types. *Pisidium amnicum* occurs more often in a silty substrate and is less frequent in a sandy substrate [Timm, 1975, 1976;

Starobogotov, 1977]. *P. inflatum* is more often found in a sandy substrate and less in a silty substrate [Pirogov, 1972; Timm 1975, 1976; Starobogotov, 1972; Timm 1975, 1976; Starobogotov, 1977]. *Pisidium amnicum* has a Palaearctic distribution while *P. inflatum* occurs mainly in Europe and Western Siberia [Stadnichenko, 1984]. According to literature, when these species coexist there are no intermediate forms [Pirogov, 1972; Timm, 1976].

The aim of this study was to compare the morphometric and genetic characteristics of *P. amnicum* and *P. inflatum* and to clarify whether they are actually separate species.

## Material and methods

The samples of pea clams were collected in July and August 2014 from lakes Peipsi and Võrtsjärv,

the Emajõgi River and the Amme Stream – all located in eastern Estonia. The samples were taken by a hand net with a mesh size of 1 mm from water to a depth of 1 m. The substrate type at the sampling spots of lakes Peipsi and Võrtsjärv was sand, in Amme Stream sand-gravel and in Emajõgi River mud. The collected specimens were fixed in 96% ethanol. In addition, 8 specimens, collected in 1964–1967 from Lake Peipsi, deposited at the Centre for Limnology in Estonia and determined by the late Viivi Timm, were used in morphometric analyses. *Pisidium amnicum* and *P. inflatum* were distinguished by the height to length ratio (H/L) and by the width to length ratio (W/L). According to Ya. I. Starobogatov [Starobogatov *et al.*, 2004], H/L ratio for *P. amnicum* *s.str.* is not over 0.8 and W/L ratio is not over 0.63. These indices for *P. inflatum* are not less than 0.81 and 0.64, respectively. In present study, most of the individuals had H/L ratio over 0.81 but W/L ratio below 0.63, these specimens are placed into intermediate group *P. „amnicum-inflatum“* (hereinafter for brevity's sake also *P. „amn.-infl.“*).

#### Morphometric analyses

Nine morphometric variables of the shell were measured: length (L), height (H), width (W), commissural height (HC), length of shell's posterior part from the umbo (LP), length of the hinge (LH), height of the hinge plate (HH), length of the ligament pit (LL), height of the ligament pit (HL). The following indices were calculated: H/L, W/L, W/H, HC/H, LP/L, LH/L, HH/H and HL/LL. Measurements were made using the program NIS-Elements Documentation 3.1 (Nikon Corporation, Tokyo, Japan). For each specimen, the contour of the frontal shell section was drawn and compared with the reference curves. The reference curves were drawn after two specimens collected from Lake Peipsi in 1965–1966. These specimens were chosen because they were identified by Viivi Timm, who was one of the students of Ya. I. Starobogatov. A total of 102 specimens were analysed morphometrically.

#### Anatomical analyses

The number of inner demibranch filaments in front of the outer demibranch anterior edge was counted. According to Korniushev [1991], this characteristic is stable during ontogeny and is also species-specific. In order to count filaments, the demibranches were stained with Grenacher's borax carmine. A total of 48 specimens were analysed anatomically.

#### Statistical analyses

Statistical differences between the forms were tested using the non-parametric Kruskal-Wallis test [Kruskal, Wallis, 1952]. Principal component and canonical discriminant analyses were carried out

using log-transformed morphometric variables. Statistical analyses were performed using the program MYSTAT 12 (Systat Software Inc., San Jose, USA). The results were considered statistically significant at  $p$ -value  $<0.05$ .

#### Genetic analyses

The DNA extraction and PCR of a fragment of the mitochondrial gene cytochrome c oxidase subunit I (COI) were performed at the University of Tartu. The COI fragment was sequenced by the company Macrogen (Amsterdam, Holland). The PCR of nuclear gene internal transcribed spacer 1 (ITS-1) was carried out at the Estonian University of Life Sciences and it was sequenced at the Estonian Biocentre, core laboratory (Tartu, Estonia).

A total of 10 specimens were examined genetically. GenBank accession numbers and voucher numbers are reported in Table 1. For DNA extraction, the whole soft body of small specimens and approximately 1 mm<sup>3</sup> piece of larger specimens were used.

The COI fragment was amplified using universal primers LCO1490: 5' GGTCACAAATCATAAA-GATATTGG-3' and HC02198: 5' TAAACTTCAGGGTGACCAAAAAATCA-3' [Folmer *et al.*, 1994]. The PCR was carried out in a final volume of 25 µl containing 5 µl 5x HOT FIREPol Blend Master Mix 10 mM MgCl<sub>2</sub> (Solis BioDyne, Tartu, Estonia), 0.5 µl (20 µM) forward and reverse primers, 18 µl distilled water and 1 µl DNA template. Initial incubation for 15 min at 95°C was followed by 35 cycles consisting of denaturation at 95°C for 30 s, annealing at 55°C for 30 s and elongation at 72°C for 1 min. Final elongation was performed at 72°C for 10 min. The PCR products were visualized by electrophoresis through 1% agarose gel. The PCR products were purified with SAP/EXO I treatment using 1 µl enzyme FastAP™ Thermo Sensitive Alkaline Phosphatase 1 U/µl (Thermo Scientific, Waltham, USA) and Exonuclease I 20 U/µl (Thermo Scientific, Waltham, USA).

The ITS-1 gene amplification was carried out using universal primers 18S: 5'-TAACAAGGTTTC-CGTAGGTG-3' and 5.8S: 5'-AGCTRGCTGCGT-TCTTCATCGA-3' [White *et al.*, 1996]. The PCR was performed in a total volume of 10 µl containing of 2 µl 5x HOT FIREPol Blend Master Mix 10 mM MgCl<sub>2</sub> (Solis BioDyne, Tartu, Estonia), 0.5 µl forward and reverse primers, 5 µl distilled water and 2 µl DNA template. The PCR programme included initial incubation at 95°C for 15 min, followed by 34 cycles consisting of denaturation at 95°C for 15 min, annealing at 50°C for 1 min and elongation at 72°C for 2 min. Final elongation was performed at 72°C for 2 min. The PCR products were purified using 1 µl of enzyme FastAP™ Thermo Sensitive Alkaline Phosphatase 1 U/µl (Thermo Scientific,

Table 1. List of studied *P. amnicum s.l.* taxa. Voucher specimens are stored in the collection of Centre for Limnology, Institute of Agricultural and Environmental Sciences, Estonian University of Life Sciences.

| Spec. Code | Voucher No.            | COI GenBank Acc. No. | ITS-1 GenBank Acc. No. | Locality                |
|------------|------------------------|----------------------|------------------------|-------------------------|
| V1         | TAAM<EST> 15-1059-a-01 | KX351303             | KX351313               | Estonia, Lake Võrtsjärv |
| V2         | TAAM<EST> 15-1059-a-02 | KX351304             | KX351314               | Estonia, Lake Võrtsjärv |
| V3         | TAAM<EST> 15-1059-a-03 | KX351305             | KX351315               | Estonia, Lake Võrtsjärv |
| V4         | TAAM<EST> 15-1059-a-04 | KX351306             |                        | Estonia, Lake Võrtsjärv |
| V5         | TAAM<EST> 15-1059-a-05 | KX351307             |                        | Estonia, Lake Võrtsjärv |
| V6         | TAAM<EST> 15-1059-a-06 | KX351308             |                        | Estonia, Lake Võrtsjärv |
| P1         | TAAM<EST> 15-1059-a-07 | KX351309             | KX351316               | Estonia, Lake Peipsi    |
| P2         | TAAM<EST> 15-1059-a-08 | KX351310             | KX351317               | Estonia, Lake Peipsi    |
| A1         | TAAM<EST> 15-1059-a-09 | KX351311             | KX351318               | Estonia, Amme Stream    |
| E1         | TAAM<EST> 15-1059-a-10 | KX351312             |                        | Estonia, Emajõgi River  |

Table 2. List of COI and ITS-1 gene fragment sequences obtained from GenBank.

| Species  | COI GenBank Acc. No. | ITS-1 GenBank Acc. No. | Locality  | References                   |
|--|----------------------|------------------------|-----------|------------------------------|
| <i>Eupera cubensis</i> (Prime)                 |                      | AY093501               | Cuba      | Lee, Ó Foighil, 2003         |
| <i>E. ferruginea</i> (Kraus)                   | KF483420             |                        | Uganda    | Clewing <i>et al.</i> , 2013 |
| <i>E. ferruginea</i>                           | KF483421             |                        | Uganda    | Clewing <i>et al.</i> , 2013 |
| <i>E. platensis</i> Doello-Jurado              |                      | AY093502               | Argentina | Lee, Ó Foighil, 2003         |
| <i>Pisidium (Cyclocalyx) casertanum</i> (Poli) |                      | AY093515               | Germany   | Lee, Ó Foighil, 2003         |
| <i>P. (C.) casertanum</i>                      | KF483386             |                        | Germany   | Clewing <i>et al.</i> , 2013 |
| <i>P. (C.) globulare</i> Westerlund            | KF483423             |                        | Germany   | Clewing <i>et al.</i> , 2013 |
| <i>P. (C.) henslowanum</i> (Sheppard)          | KF483398             |                        | Macedonia | Clewing <i>et al.</i> , 2013 |
| <i>P. (C.) hibernicum</i> Westerlund           |                      | AY093522               | Germany   | Lee, Ó Foighil, 2003         |
| <i>P. (C.) lilljeborgii</i> Esmark & Hoyer     |                      | AY093521               | Russia    | Lee, Ó Foighil, 2003         |
| <i>P. (C.) lilljeborgii</i>                    | KF483406             |                        | Norway    | Clewing <i>et al.</i> , 2013 |
| <i>P. (C.) milium</i> Held                     |                      | AY093523               | Germany   | Lee, Ó Foighil, 2003         |
| <i>P. (C.) nitidum</i> Jenyns                  |                      | AY093526               | Germany   | Lee, Ó Foighil, 2003         |
| <i>P. (C.) nitidum</i>                         | KF483385             |                        | Germany   | Clewing <i>et al.</i> , 2013 |
| <i>P. (C.) obtusale</i> (Lamarck)              | KF483387             |                        | Germany   | Clewing <i>et al.</i> , 2013 |
| <i>P. (C.) personatum</i> Malm                 |                      | AY093527               | Germany   | Lee, Ó Foighil, 2003         |
| <i>P. (C.) personatum</i>                      | KF483389             |                        | Georgia   | Clewing <i>et al.</i> , 2013 |
| <i>P. (C.) subtruncatum</i> Malm               |                      | AY093528               | Germany   | Lee, Ó Foighil, 2003         |
| <i>P. (C.) supinum</i> Schmidt                 |                      | AY093529               | Germany   | Lee, Ó Foighil, 2003         |
| <i>P. (C.) supinum</i>                         | KF483388             |                        | Germany   | Clewing <i>et al.</i> , 2013 |
| <i>P. (Pisidium) amnicum</i> (Müller)          |                      | DQ062573               | N/A       | Steiner, unpublished         |
| <i>P. (P.) amnicum</i>                         |                      | DQ062574               | N/A       | Steiner, unpublished         |
| <i>P. (P.) dubium</i> (Say)                    |                      | AY093533               | USA       | Lee, Ó Foighil, 2003         |

Table 3. Summary of the morphometric shell characteristics and the results of the Kruskal-Wallis test.

| Index | <i>P. amnicum</i> |             | <i>P. "amnicum-inflatum"</i> |            | <i>P. inflatum</i> |            | H      | p-value |
|-------|-------------------|-------------|------------------------------|------------|--------------------|------------|--------|---------|
|       | Mean±SD           | Min–Max     | Mean±SD                      | Min–Max    | Mean±SD            | Min–Max    |        |         |
|       | n=19              |             | n=71                         |            | n=12               |            |        |         |
| H/L   | 0.79±0.013        | 0.75–0.80   | 0.83±0.016                   | 0.81–0.87  | 0.87±0.015         | 0.83–0.88  | 60.353 | <0.0001 |
| W/L   | 0.54±0.022        | 0.49–0.57   | 0.57±0.024                   | 0.50–0.62  | 0.66±0.020         | 0.64–0.69  | 46.58  | <0.0001 |
| W/H   | 0.68±0.029        | 0.63–0.73   | 0.69±0.027                   | 0.62–0.74  | 0.76±0.022         | 0.73–0.80  | 30.98  | <0.0001 |
| HC/H  | 0.96±0.010        | 0.93–0.98   | 0.97±0.009                   | 0.95–0.99  | 0.96±0.007         | 0.95–0.97  | 10.449 | 0.005   |
| LP/L  | 0.34±0.014        | 0.32–0.37   | 0.34±0.017                   | 0.29–0.37  | 0.34±0.017         | 0.30–0.37  | 2.02   | 0.364   |
| LH/L  | 0.53±0.019        | 0.50–0.56   | 0.54±0.020                   | 0.49–0.58  | 0.54±0.014         | 0.52–0.57  | 2.275  | 0.321   |
| HH/H  | 0.072±0.010       | 0.048–0.087 | 0.088±0.008                  | 0.069–0.11 | 0.09±0.007         | 0.078–0.10 | 31.712 | <0.0001 |
| HL/LL | 0.28±0.042        | 0.2–0.36    | 0.31±0.034                   | 0.23–0.44  | 0.29±0.021         | 0.26–0.33  | 10.176 | 0.006   |

Table 4. Number of inner demibranch filaments in the three forms of *P. amnicum s.l.* and the results of the Kruskal-Wallis test.

| Character           | <i>P. amnicum</i> |         | <i>P. "amnicum-inflatum"</i> |         | <i>P. inflatum</i> |         | H    | p-value |
|---------------------|-------------------|---------|------------------------------|---------|--------------------|---------|------|---------|
|                     | Mean±SD           | Min–Max | Mean±SD                      | Min–Max | Mean±SD            | Min–Max |      |         |
|                     | n=8               |         | n=36                         |         | n=4                |         |      |         |
| Number of filaments | 14.38±2.07        | 11–18   | 14.17±2.51                   | 9–18    | 13.25±1.50         | 11–14   | 0.72 | 0.70    |

Waltham, USA) and 1 µl Exonuclease I 20 U/µl (Thermo Scientific, Waltham, USA). The PCR products were visualized by electrophoresis through 1% agarose gel. The DNA sequences were aligned by the ClustalW method using the program Mega 6.0 [Tamura *et al.*, 2013].

Phylogenetic relationships were examined with maximum parsimony (MP) method for the COI and ITS-1 gene fragments. Additional sequences of other *Pisidium* species, *P. (P.) dubium* from the subgenus *Pisidium* and several species from the subgenus *Cyclocalyx*, as well as three species from genus *Eupera* as an outgroup were obtained from GenBank. Accession numbers of DNA sequences obtained from GenBank are reported in Table 2. Phylogenetic tree was constructed using program Mega 6.0 [Tamura *et al.*, 2013]. Heuristic searches were conducted using 100 random stepwise addition and tree bisection-reconnection (TBR) branch-swapping. Sequence gaps were considered as missing data. Bootstrap values were obtained from 1000 replicates. Branches with bootstrap values lower than 50% were condensed.

## Results

### Morphological characteristics

In total, 19 specimens belonged to the typical form *P. amnicum*, 71 specimens belonged to the

form *P. „amnicum-inflatum“* and 12 specimens belonged to the typical form *P. inflatum*. The Kruskal-Wallis test revealed that the following indices differed between the forms: height to length ratio (H/L), width to length ratio (W/L), width to height ratio (W/H), commissural height to shell height ratio (HC/H), height of the hinge plate to shell height ratio (HH/H), height of ligament pit to length of ligament pit ratio (HL/LL) (Table 3). The ratio of the length of the posterior part (from the umbo) to total shell length (LP/L), and the ratio of the length of the hinge to total shell length (LH/L) were not significantly different between the forms.

Comparison of the contour of the frontal shell section with reference contours revealed intermediate forms. Each sample contained specimens whose curvature coincided with the reference curve, as well as transition forms. Hence, the comparatorial method is inapplicable for distinguishing these two forms.

The difference in the number of inner demibranch filaments in front of the outer demibranch anterior edge was not statistically significant between the forms of *P. amnicum s.l.* (Table 4).

### Principal component analysis

The first principal component explained 71.89% and the second principal component explained 15.69% of the total variation. The eigenvalues for

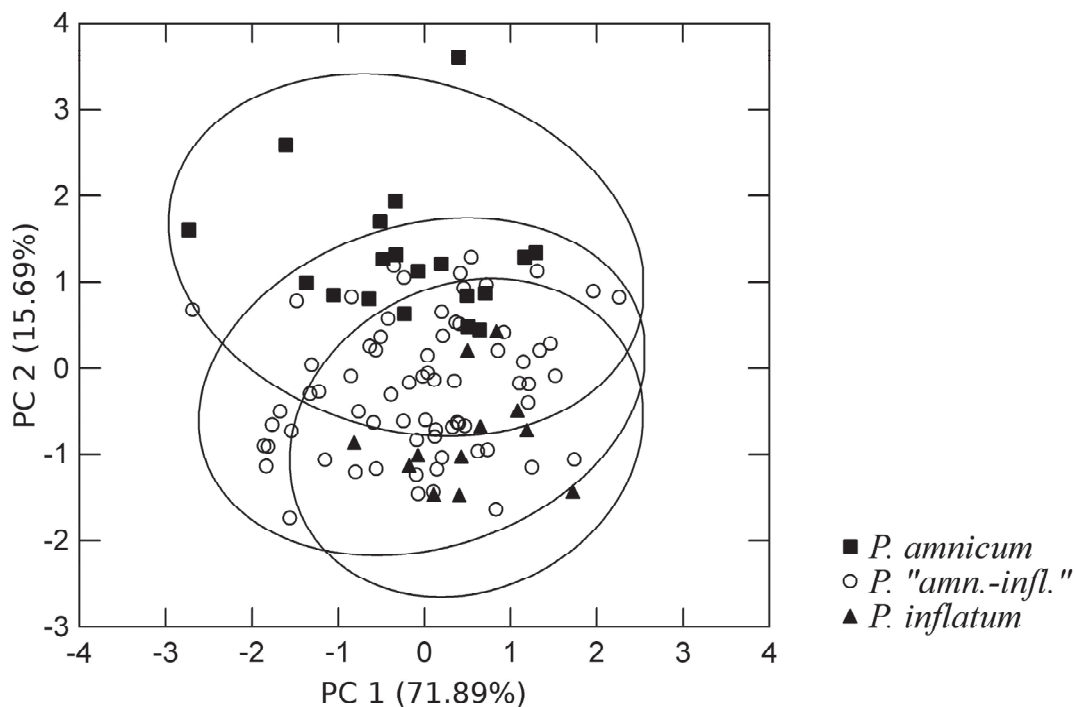


FIG. 3. Scatterplot of the first two principal component scores.

РИС. 3. Диаграмма рассеяния значений первых двух главных компонент.

Table 5. Logarithm transformed loadings of the first two principal components.

| Character                      | PC 1  | PC 2   |
|--------------------------------|-------|--------|
| Log length (L)                 | 0.928 | 0.324  |
| Log height (H)                 | 0.983 | 0.106  |
| Log width (W)                  | 0.923 | -0.04  |
| Log commissural height (HC)    | 0.983 | 0.087  |
| Log posterior part length (LP) | 0.798 | 0.481  |
| Log hinge length (LH)          | 0.901 | 0.286  |
| Log hinge plate height (HH)    | 0.538 | -0.711 |
| Log ligament pit length (LL)   | 0.745 | -0.508 |
| Log ligament pit height (HL)   | 0.729 | -0.459 |
| % of the total variance        | 71.89 | 15.69  |

the first two principal components were 6.47 and 1.41. The first principal component was strongly correlated with shell height (H), commissural height (HC), length (L), width (W) and hinge length (LH) (Table 5). The three forms were more distinctly separated by the second principal component, which was strongly positively correlated with length of the posterior part of the shell from the umbo (LP) and negatively correlated with the height of the hinge plate (HH). There was an overlap of 95% confidence ellipses of the three forms (Fig. 3).

#### Discriminant analysis

The three forms were distinguished statistically significantly (Wilks' lambda: 0.174; approx. F-ratio: 14.145;  $p < 0.0001$ ). The eigenvalues for the first two discriminant functions were 2.8 and 0.52. Specimens pertaining to the typical forms *P. amnicum* and *P. inflatum* were 100% correctly classified and specimens of the form *P. „amn.-inflatum“* were 89% correctly classified. The first discriminant function explained 84.4% and the second function explained 15.6% of the total variation. The first function was strongly positively correlated with shell length (L) and negatively correlated with commissural height (HC). The second function was strongly positively correlated with shell width (W) and negatively correlated with commissural height (HC) (Table 6). There was an overlap of 95% confidence ellipses of the three forms (Fig. 4).

#### Genetic analyses

The length of the sequenced mitochondrial COI fragment used in the analyses was 608 nucleotides. Alignment of the sequences revealed 5 variable sites of which only one site was informative for parsimony analysis (Table 7). Three haplotypes were found, which differed by two (0.33% divergence) or four (0.66% divergence) sites. Haplotype I was the most abundant and included specimens from all three *P. amnicum s.l.* forms.

The length of the sequenced nuclear gene ITS-1 used in the analyses was 424 nucleotides. The ITS-



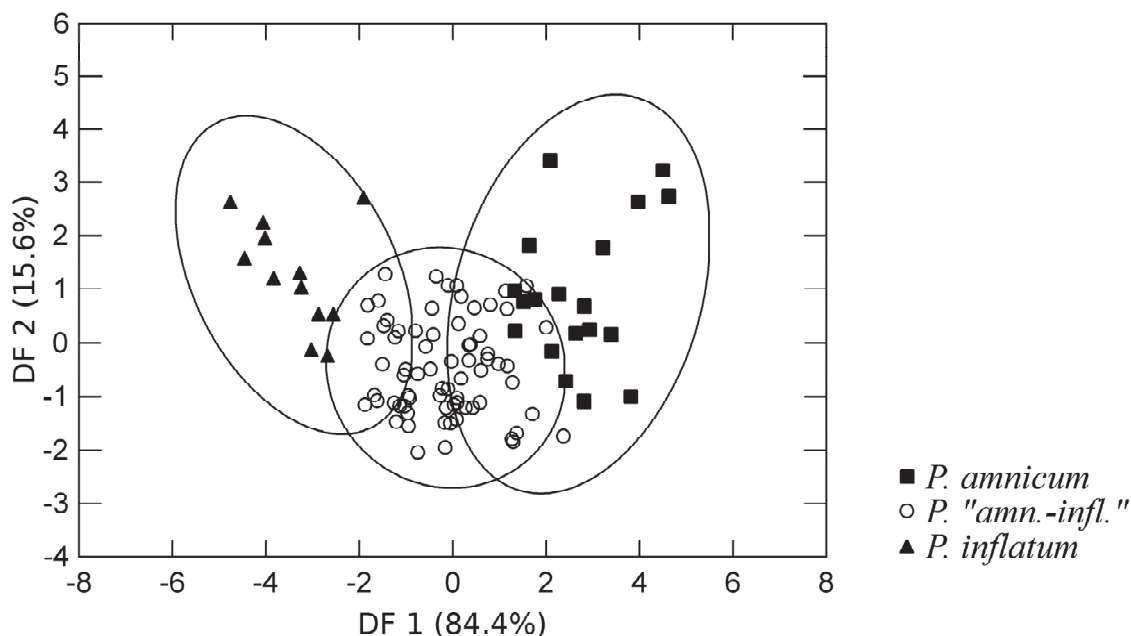


FIG. 4. Scatterplot of the first two discriminant function scores.

РИС. 4. Диаграмма рассеяния значений первых двух дискриминантных функций.

1 gene was successfully sequenced for 6 specimens (2 specimens from each form of *P. amnicum s.l.*). All sequences were genetically identical.

The results of phylogenetic analyses showed that the subgenus *Pisidium s.str.* formed a well supported clade in both, COI and ITS-1 dataset, which is congruent with previous molecular studies (Lee, Ó Foighil, 2003; Schultheiß *et al.*, 2008; Clewing *et al.*, 2013). In COI dataset, *P. amnicum s.l.* clade was sister to a *polytomous* clade consisting of six branches which supported taxa of the *Pisidium* subgenus *Cyclocalyx* (Fig. 5). *Pisidium „amn.-infl.“* from Emajõgi River and *P. amnicum* from Lake Peipsi occupied a well-supported basal position within *P. amnicum s.l.* clade.

*Pisidium dubium*, a North-American representative of the subgenus *Pisidium s.str.*, was basal to the *P. amnicum s.l.* clade in ITS-1 dataset (Fig. 6). Two *P. amnicum* sequences obtained from GenBank formed a moderately supported clade, sister to other *P. amnicum s.l.* taxa.

## Discussion

Morphometric analyses showed that the *P. inflatum* form differs from *P. amnicum s.str.* in a higher hinge plate, which is in accordance with relevant literature data [Pirogov, 1972; Timm, 1975; Stadnichenko, 1984]. Differences in the position of the umbo, as suggested by earlier authors [Timm, 1975; Stadnichenko, 1984], were not confirmed. Some morphometric indices of shell characteristics showed statistically significant differences between

Table 6. Logarithm transformed scores of the first two discriminant functions.

| Character                      | DF 1   | DF 2   |
|--------------------------------|--------|--------|
| Log length (L)                 | 4.907  | 0.528  |
| Log height (H)                 | 0.457  | 1.144  |
| Log width (W)                  | -1.84  | 1.976  |
| Log commissural height (HC)    | -3.604 | -3.13  |
| Log posterior part length (LP) | -0.035 | 0.612  |
| Log hinge length (LH)          | -0.078 | -0.617 |
| Log hinge plate height (HH)    | -0.112 | -0.576 |
| Log ligament pit length (LL)   | 0.079  | 0.217  |
| Log ligament pit height (HL)   | 0.1    | -0.151 |
| % of the total variance        | 84.4   | 15.6   |

Table 7. Nucleotide differences for studied COI fragment.

| Specimen                    | Haplo-type | Variable site position |     |     |     |     |
|-----------------------------|------------|------------------------|-----|-----|-----|-----|
|                             |            | 135                    | 179 | 318 | 390 | 564 |
| <i>P. inflatum</i> (V1)     | I          |                        |     |     |     |     |
| <i>P. inflatum</i> (V2)     | I          | T                      | T   | A   | A   | G   |
| <i>P. „amn.-infl.“</i> (V3) | I          | •                      | •   | •   | •   | •   |
| <i>P. „amn.-infl.“</i> (V4) | I          | •                      | •   | •   | •   | •   |
| <i>P. „amn.-infl.“</i> (V5) | I          | •                      | •   | •   | •   | •   |
| <i>P. „amn.-infl.“</i> (V6) | I          | •                      | •   | •   | •   | •   |
| <i>P. „amn.-infl.“</i> (P1) | I          | •                      | •   | •   | •   | •   |
| <i>P. amnicum</i> (A1)      | I          | •                      | •   | •   | •   | •   |
| <i>P. amnicum</i> (P2)      | II         | •                      | C   | •   | •   | A   |
| <i>P. „amn.-infl.“</i> (E1) | III        | C                      | •   | T   | G   | A   |

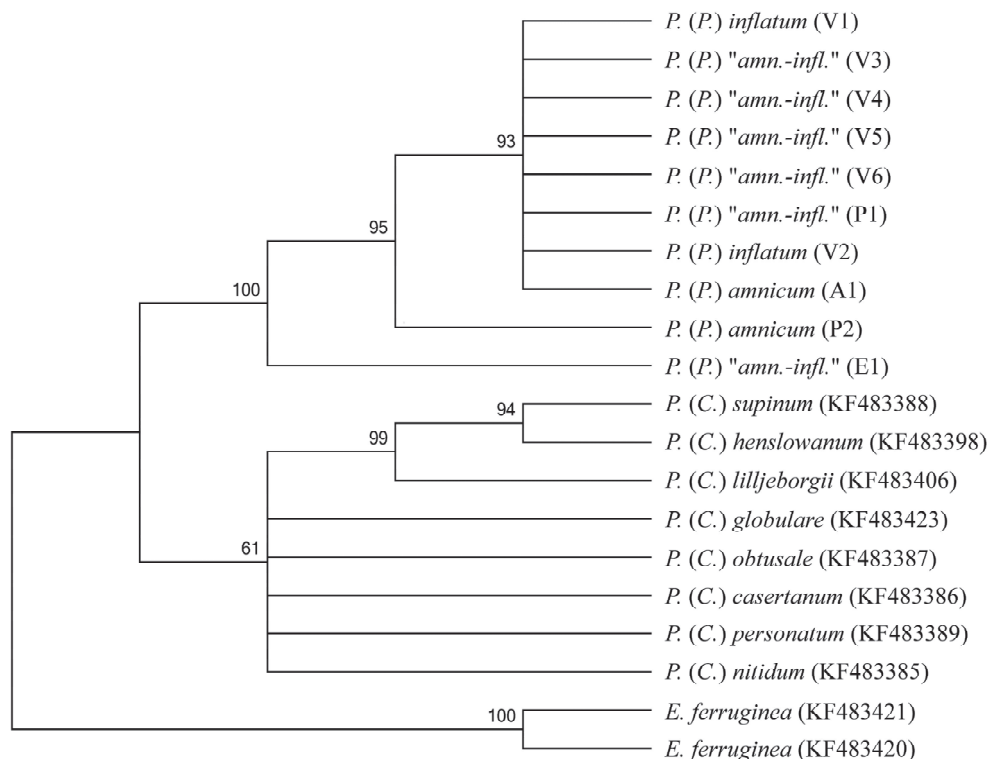


FIG. 5. Maximum parsimony strict consensus tree with bootstrap values of the COI dataset. Sequences obtained from GenBank are indicated with accession numbers.

РИС. 5. Строго консенсусное наиболее экономное дерево с бутстрап поддержками, основанное на данных COI. Для последовательностей из GenBank приведены инвентарные номера.

the three forms of *P. amnicum s.l.*, however, there occurred intermediate values. Discriminant analyses indicated that typical individuals of *P. amnicum s.str.* and *P. inflatum* were morphologically distinct and can be identified with multivariate methods.

One of the characteristics of *P. inflatum* is the shape of cardinal tooth  $C_2$  on the left valve: it is more sharply bent than that of *P. amnicum*, according to Timm [1975] and Stadnichenko [1984]. In this study no differences were found in the hinge teeth between these forms: these teeth were evenly rounded or sharply bent in both forms.

The family Sphaeriidae is characterized by the plasticity of morphological and anatomical traits [Holopainen, Kuiper, 1982; Korniusshin, 1996]. Variability in morphological characteristics may be related to the bottom substrate. It has been shown that the specimens of *P. subtruncatum* Malm, 1855 living in a silty substrate have a lower shell than those living in a sandy substrate [Funk, Reckendorfer, 2008]. Shell morphology is also affected by water movement: specimens living in open shore exposed to waves have a thicker and more triangularly shaped shell than those inhabiting low exposure areas [Korniusshin, 1996]. It has been shown that the unionids living in areas exposed to waves have a higher and heavier shell than the specimens

living in less exposed areas [Hinch, Bailey, 1988]. Shell morphology can be also affected by parasite infection. Specimens of the family Unionidae affected by trematodes have a longer and wider shell than uninfected specimens [Zieritz, Aldridge, 2011].

I observed transition forms, regarding the frontal shell section contour, between the two studied typical forms, *P. amnicum* and *P. inflatum*. Hence the comparatorial method cannot be used for distinguishing between *P. amnicum* and *P. inflatum*. Lack of the hiatus between species determined by the comparatorial method has also been reported for the families Margaritiferidae [Bolotov *et al.*, 2013] and Unionidae [Bogatov, 2014].

According to COI fragment sequences, genetic variation between the forms *P. amnicum s.str.* and *P. inflatum* was ten times as small as the 3% interspecific threshold proposed by Hebert *et al.* [2003]. As is known, there is no fixed threshold for discrimination of species. A small, less than 1% genetic divergence between species has been described for lepidopterans [Hebert *et al.*, 2003] and birds [Johnson, Cicero, 2002]. Although, one specimen of *P. amnicum* and one *P. „amn.-inflatum“* specimen formed separate branches in the maximum parsimony tree of the COI dataset, their difference from other *P. amnicum s.l.* taxa was only



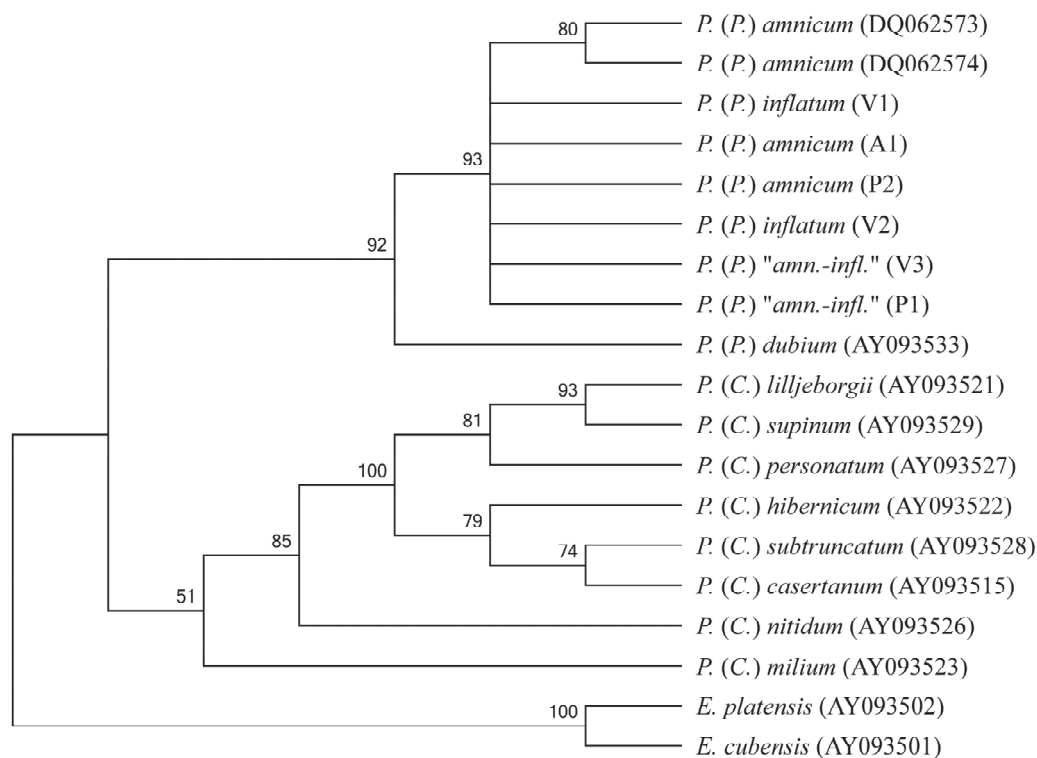


FIG. 6. Maximum parsimony strict consensus tree with bootstrap values of the ITS-1 dataset. Sequences obtained from GenBank are indicated with accession numbers.

РИС. 6. Строго консенсусное наиболее парсимонийное дерево с бутстрап поддержками, основанное на данных ITS-1. Для последовательностей из GenBank приведены инвентарные номера.

0.33–0.66% and overlapped intraspecific variability. Consequently, these forms cannot be considered as separate species.

#### Conclusion

This study showed that according to morphometrical, anatomical and genetic data, *P. amnicum* and *P. inflatum* cannot be considered as separate species. *Pisidium inflatum* should be treated as an ecological form living mainly in a sandy substrate, as well as a synonym of *P. amnicum*. The taxonomic status of other pea clam species distinguished by the comparatorial method should be determined in further studies.

#### Acknowledgements

I am indebted to the director of the Natural History Museum of the University of Tartu, Prof. Urmas Kõljalg, as well as to Eve Laasik, Rasmus Puusepp from the Museum and Katrin Kaldma from the Estonian University of Life Sciences for performing the DNA analyses. I am grateful to Dr. biol. Tarmo Timm (Estonian University of Life Sciences) for proposing the subject and for making critical remarks concerning the manuscript. I also thank two reviewers for their helpful comments. Dr. Külli Kangur (Estonian University of Life Sciences) supported the DNA analyses financially. Ester Jaigma revised the English text of the manuscript.

#### References

- Bogatov V.V. 2014. Does the comparatorial method has a future in diagnosing large bivalves (Bivalvia: Unionida)? *Izvestiya RAN, Seriya biologicheskaya*, 3: 309-320 [In Russian].
- Bolotov I.N., Makhrov A.A., Bepalaya Yu.V., Vikhrev I.V., Aksenova O.V., Aspholm P.E., Gofarov M.Yu., Ostrovskii A.N., Popov I.Yu., Pal'tser I.S., Rudzite M., Rudzitis M., Voroshilova I.S., Sokolova S.E. 2013. Results of testing comparatory method: the curvature of the shell valve frontal section is inappropriate as a systematic character for the freshwater pearl mussel of the genus *Margaritifera*. *Biology Bulletin*, 40(2): 221-231.
- Clessin S. 1887. *Molluskenfauna Oesterreich-Ungarns und der Schweiz*. Verlag von Bauer & Raspe, Nürnberg, 858 p.
- Clewing C., Bössneck U., Oheimb P.V. von, Albrecht C. 2013. Molecular phylogeny and biogeography of a high mountain bivalve fauna: the Sphaeriidae of the Tibetan Plateau. *Malacologia*, 56(1-2): 231-252.
- Funk A., Reckendorfer W. 2008. Environmental heterogeneity and morphological variability in *Pisidium subtruncatum* (Sphaeriidae, Bivalvia). *International Review of Hydrobiology*, 93(2): 188-199.
- Germain L. 1930. *Fauna de France: mollusques terrestres et fluviatiles*. Vol. 21. Fédération Française des Sociétés de Sciences Naturelles, Office central de faunistique, Paris, 897 p.

- Glöer P., Meier-Brook C. 2003. *Süßwassermollusken*. Deutscher Jugendbund für Naturbeobachtung, Hamburg, 134 p.
- Graf D.L. 2007. Palearctic freshwater mussel (Mollusca: Bivalvia: Unionoida) diversity and the comparative method as a species concept. *Proceedings of the Academy of the Natural Sciences of Philadelphia*, 156(1): 71-88.
- Hebert P.D.N., Cywinska A., Ball S.L., de Waard J.R. 2003. Biological identifications through DNA barcodes. *Proceedings of the Royal Society B: Biological Sciences*, 270: 313-321.
- Hinch S.G., Bailey R.C. 1988. Within- and among-lake variation in shell morphology of the freshwater clam *Elliptio complanata* (Bivalvia: Unionidae) from south-central Ontario lakes. *Hydrobiologia*, 157: 27-32.
- Holopainen I.J., Kuiper J.G.J. 1982. Notes on the morphology and anatomy of some *Pisidium* and *Sphaerium* species (Bivalvia, Sphaeriidae). *Annales Zoologici Fennici*, 19: 93-107.
- Izzatullaev Z.I., Starobogatov Ya.I. 1984. The genus *Melanopsis* (Gastropoda, Pectinibranchia) and its representatives in water bodies of the USSR. *Zoologicheskii zhurnal*, 63(10): 1471-1483. [In Russian].
- Johnson N.K., Cicero C. 2002. The role of ecologic diversification in sibling speciation of *Empidonax* flycatchers (Tyrannidae): multigene evidence from mtDNA. *Molecular Ecology*, 11: 2065-2081.
- Kantor Yu.I., Sysoev A.V. 2005. *Catalogue of molluscs of Russia and adjacent countries*. Tovarishchestvo nauchnykh izdaniy KMK, Moskva, 627 p. [In Russian].
- Kodolova O.P., Logvinenko B.M. 1973. Comparison of different populations of bivalves *Unio pictorum* L. and *U. tumidus* Retz. (Unionidae) with respect to myogen systems and shell morphology. *Zoologicheskii zhurnal*, 52(7): 987-998 [In Russian].
- Kodolova O.P., Logvinenko B.M. 1974. Comparison of different populations of bivalves of the genus *Anodonta* (Unionidae) with respect to myogen systems and shell morphology. *Zoologicheskii zhurnal*, 53(4): 531-545 [In Russian].
- Korniushin A.V. 1991. Anatomical aspects of the taxonomy and phylogeny of Pisidioidea (Bivalvia). In: Meier-Brook C. (Ed.) *Proceedings of the Tenth International Malacological Congress Tübingen, 1989*, 601-605.
- Korniushin A.V. 1996. *Bivalve molluscs of the superfamily Pisidioidea in the Palearctic region*. Institut zoologii im. I.I. Shmal'gauzena NAN Ukrainy, Kiev, 175 p. [In Russian].
- Korniushin A.V. 2002. On the species diversity of freshwater bivalve mollusks in Ukraine and the strategy of their conservation. *Vestnik zoologii*, 36(1): 9-23. [In Russian].
- Kruskal W.H., Wallis W.A. 1952. Use of ranks in one-criterion variance analysis. *Journal of the American Statistical Association*, 47(260): 583-621.
- Kuiper J.G.J., Wolf W.J. 1970. The Mollusca of the estuarine region of the rivers Rhine, Meuse and Scheldt in relation to the hydrography of the area. III. The genus *Pisidium*. *Basteria*, 34(1-2): 1-42.
- Lee T., Ó Foighil D. 2003. Phylogenetic structure of the Sphaeriinae, a global clade of freshwater bivalve molluscs, inferred from nuclear (ITS-1) and mitochondrial (16S) ribosomal gene sequences. *Zoological Journal of the Linnean Society*, 137: 245-260.
- Logvinenko B.M., Starobogatov Ya.I. 1971. The curvature of the frontal section of the valve as a taxonomical character of the bivalve molluscs. *Nauchnye Doklady Vysshey Shkoly, Biologicheskie nauki*, 5: 7-10 [In Russian].
- Pirogov V.V. 1972. Large molluscs of the family Pisidiidae in the Volga delta. *Zoologicheskii zhurnal*, 51(12): 1798-1803 [In Russian].
- Raup D.M. 1966. Geometrical analysis of shell coiling: general problems. *Journal of Paleontology*, 40(5): 1178-1190.
- Schultheiß R., Albrecht C., Bößneck U., Wilke T. 2008. The neglected side of speciation in ancient lakes: phylogeography of an inconspicuous mollusc taxon in lakes Ohrid and Prespa. *Hydrobiologia*, 615: 141-156.
- Sergeeva I.S., Bolotov I.N., Bepalaya Yu.V., Makhrov A.A., Bukhanova A.L., Artamonova V.S. 2008. Freshwater pearl mussels of the genus *Margaritifera* (Mollusca: Bivalvia) described as *M. elongata* (Lamarck, 1819) and *M. borealis* (Westerlund, 1871) should be classified with *M. margaritifera* (Linnaeus, 1758). *Biology Bulletin*, 35(1): 102-105.
- Shikov E.V., Zatravkin M.N. 1991. The comparative method of taxonomic study of Bivalvia used by Soviet malacologists. *Malakologische Abhandlungen*, 15(17): 149-159.
- Stadnichenko A.P. 1984. *Fauna of Ukraine*. Vol. 29. *Molluscs*. No. 9. (Unionidae, Cycladidae). Naukova Dumka, Kiev, 383 p. [In Ukrainian].
- Starobogatov Ya.I. 1977. *Keys to Freshwater Invertebrates of the European USSR*. Gidrometeoizdat, Leningrad, 512 p. [In Russian].
- Starobogatov Ya.I., Prozorova L.A., Bogatov V.V., Saenko E.M. 2004. Mollyuski. In: Tsalolikhin S. Ya. (Ed.) *Key to freshwater invertebrates of Russia and adjacent countries*. Vol. 6. *Molluscs, polychaetes, nemerteans*. Nauka, Sankt-Peterburg: 9-492 [In Russian].
- Stasek C.R. 1963. Geometrical form and gnomonic growth in the bivalved Mollusca. *Journal of Morphology*, 112(3): 215-231.
- Tamura K., Stecher G., Peterson D., Filipksi A., Kumar S. 2013. Mega6: Molecular evolutionary genetics analysis version 6.0. *Molecular Biology and Evolution*, 31(12): 2715-2729.
- Thompson D.W. 1945. *On growth and form*. The University Press, Cambridge, 1016 p.
- Timm V. 1975. The Pisidiinae and the Euglesinae of the Lake Võrtsjärv. In: Frey T. et al. (Eds.) *Productivity of Estonian water bodies. Estonian Contributions to the International Biological Programme*, 6: 201-261.
- Timm V. 1976. On the Pisidiidae of Lake Peipsi-Pihkva. *Eesti NSV Teaduste Akadeemia Toimetised: Bioloogia*, 25(1): 37-52.
- Voroshilova I.S. 2013. Are the contours of the frontal section of shell valves in Bivalvia specific? *Biology Bulletin*, 40(3): 289-296.
- White L.R., McPherson B.A., Stauffer J.R. 1996. Molecular genetic identification tools for the unionids of French Creek, Pennsylvania. *Malacologia*, 38(1-2): 181-202.

Woodward B.B. 1913. *Catalogue of the British species of Pisidium (recent & fossil) in the British Museum (Natural History), with notes on those of Western Europe*. Trustees of the British Museum, London, 144 p.

Zhadin V.I. 1952. *Mollusca of fresh and brackish waters of the USSR*. Zoologicheskii Institut Akademii Nauk SSSR, Moskva, 376 p. [In Russian]

Zieritz A., Aldridge D.C. 2011. Sexual, habitat-constrained and parasite-induced dimorphism in the shell of a freshwater mussel (*Anodonta anatina*, Unionidae). *Journal of Morphology*, 272: 1365-1375.

Таксономический статус *Pisidium amnicum* (Müller, 1774) и *P. inflatum* Megerle von Mühlfeld in Porro, 1838 (Mollusca: Bivalvia: Sphaeriidae)

Маргус ВООДЕ

Centre for Limnology, Institute of Agricultural and Environmental Sciences, Estonian University of Life Sciences, Fr.R.Kreutzwaldi 5, 51014 Tartu, ESTONIA, e-mail margus.voode@emu.ee

**РЕЗЮМЕ.** В соответствии с таксономической системой, принятой в России и Эстонии, крупные локальные формы шаровок (Sphaeriidae) рассматривались как два вида, *P. amnicum* и *P. inflatum*. Целью работы было выяснение, являются ли *P. amnicum* и *P. inflatum* самостоятельными видами. Популяции обеих форм из Эстонии были проанализированы с помощью морфологических и молекулярных методов. Анализ фрагментов генов COI и ITS-1 показал, что обе формы генетически не различаются. Хотя были найдены статистически достоверные различия в пропорциях раковин типичных особей, существовали также и особи с промежуточными значениями. Соответственно, *P. inflatum* нельзя считать отдельным видом и он должен рассматриваться как экологический вариант *P. amnicum*, населяющий, в основном, характерные песчаные субстраты.

